



W2001 CHRISTY SLURRY

WATERPROOFING BY CRYSTALLIZATION.

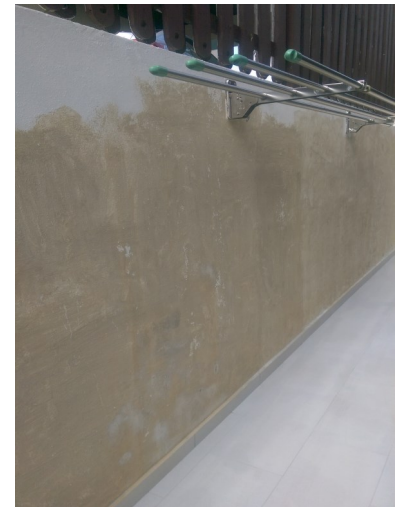
DESCRIPTION

W2001 crystalline capillary waterproofing system provides a permanent solution to leakage, seepage or ingress of water and moisture. The waterproofing effect is achieved by the reaction of the several chemical components of **W2001** when combined within the concrete matrix. The compound penetrates deep into the capillary tracts of the concrete by pressure of osmosis and forms crystals that block capillaries and fill hairline non-structural cracks caused by shrinkage or expansion to drive out moisture while still permitting concrete to breathe and avoiding vapor pressure to build. In the absence of further moisture, components of **W2001** lie dormant. Should moisture recur at any time, the chemical action and sealing process repeats itself automatically and advances even more deeply into the concrete.

AREAS OF APPLICATION

W2001 is recommended for use in any concrete or block structure where keeping water in or out is required. **W2001** meets all waterproofing requirements as it is applicable to both the positive side (side exposed to water) and the negative side (side opposite the water).

- Water Tanks
- Manholes of sewage and water treatment plants.
- Manholes of nuclear power plants.
- Bathroom and toilets. Swimming pools.
- Tunnels. Reservoirs
- Aquariums Sewage and water treatment tanks
- Foundations Elevator shafts
- Underground vaults Industrial installations
- Parking decks Traffic-bearing structures
- Base slabs Diaphragm walls, Basements Wall
- Concrete roofs Bathrooms



FEATURES

1. Becomes an integral part of the concrete unlike metallic and membrane types of waterproofing, which only form a surface barrier.
2. Completely effective against high hydrostatic head pressure.
3. Increases concrete's compressive strength.
4. Permits concrete to breathe, eliminating water vapor build-up and leaving the concrete completely dry.
5. Penetrates deep into the concrete (Up to 20cm). Seals cracks of up to 0.4mm.
6. Can be applied from either the positive or negative side.
7. Waterproofing remains even if the surface is damaged.

WARRIOR PTE LTD

Blk 17 Marsiling Industrial Estate Road 1 # 01-11 Singapore 739279

Tel: (65) 6364 5100 / 6364 5060 / 6367 3676 Fax: (65) 6364 0629

war99@singnet.com.sg www.warrior.com.sg

*bizSAFE*₃



W2001 CHRISTY SLURRY

WATERPROOFING BY CRYSTALLIZATION.

8. Resists chemical attack (PH 3 -11 constant contact; PH 2 -12 periodic contact) and provides a wide range of protection from freeze/thaw cycles, aggressive subsoil waters, sea water, carbonates, chlorides, Sulfate and Nitrates.
9. Ease of application and labor-cost effective. Can be applied to moist or green concrete.
10. Does not require protection during backfilling, placement of steel or wire mesh, and other common procedures.
11. Protects reinforcing steel. Nontoxic.

SURFACE PREPARATION

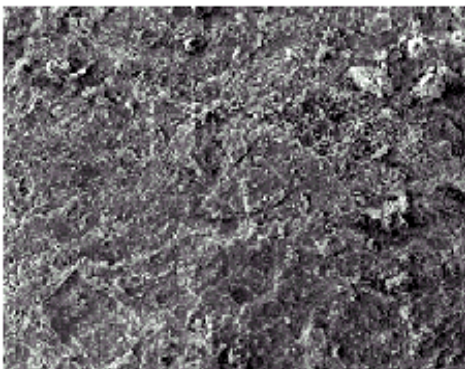
Existing Concrete

1. Surfaces must be clean and sound. Remove all oil, dirt, laitance and other contaminants which may impair the performance of LTL by water blasting or sand blasting or chiseling.
2. Surface must be damp for application to ensure maximum chemical penetration.

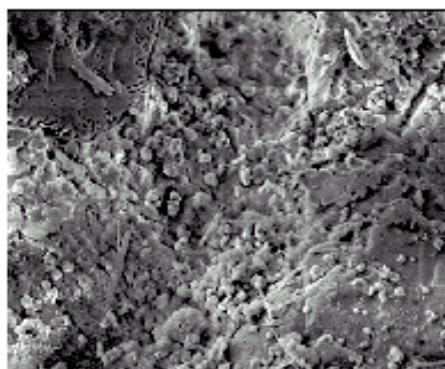
New Concrete

1. Surfaces must be clean and sound. Remove all oil, dirt, laitance and other contaminants which may impair the performance of LTL by water blasting or sand blasting or chiseling.
2. Construction, cold and non-leaky joints greater than 0.25 mm wide must be routed out (minimum 25 mm wide by 25 mm deep) to sound concrete. Routing should be done in a "U" shape. Leaking cracks should be route out as above (25 mm wide and 38 mm to 51 mm deep) to sound concrete. Clean all debris and loose concrete from leaking area.
3. Surface must be kept damp for the next 24 hours to ensure maximum chemical penetration.

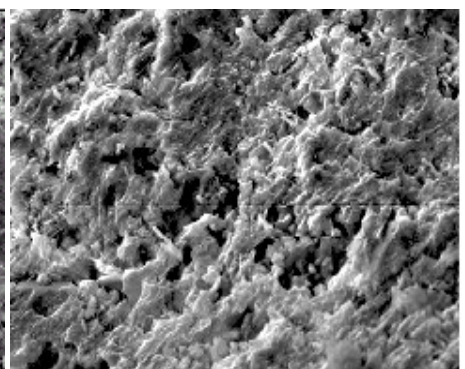
7 DAYS



28 DAYS



56 DAYS



WARRIOR PTE LTD

Blk 17 Marsiling Industrial Estate Road 1 # 01-11 Singapore 739279

Tel: (65) 6364 5100 / 6364 5060 / 6367 3676 Fax: (65) 6364 0629

war99@singnet.com.sg www.warrior.com.sg





W2001 CHRISTY SLURRY

WATERPROOFING BY CRYSTALLIZATION.

APPLICATION METHOD

Brush Application

Mix Ratio = **W2001** : **Water**
 5 : **2** *by weight*

Apply the mixture by masonry brush (synthetic bristle).

Spray Application

Mix Ratio = **W2001** : **Water**
 2 : **1** *by weight*

It is recommended to use drop hopper or piston pump type equipment.

Application

1. Stir the mixture frequently during the application and prepare only as much as can be applied, use it within 20-minute period.
2. Prior to application, Patch form tie holes, routed out cracks, honey-combed, flashing and seal strips at construction joints with **W1 + Cement mortar**.
3. **1ST coat:** thickness of just under 1.0 mm
4. **2ND coat:** Applied when 1ST coat is dry to the touch.
A light misting of water may be required between coats in hot or dry climates.

COVERAGE **0.8 - 1.2 kg / m²**

CURING

1. All treated surfaces must be kept moist for a minimum of 24 hours.
2. After initial set, moist curing, using continuous water spray is recommended.
3. Treated surfaces must be fog sprayed 3 to 4 times daily for a period of 48 hours. For warmer climates, more frequent spraying may be required. It is important to keep the treated surface moist to allow the crystal formation to grow.

STORAGE Store in cool and dry place.

PACKING **5 kg - tin, 20 kg-pail, 25 kg-pail**

Disclaimer: The information provided in this brochure is ensured to be as accurate as possible at the time of inclusion, however there may be inadvertent and occasional errors which may have slipped from our notice. Warrior Pte Ltd does not guarantee and make no representations or warranties of any kind about the information, advice and opinions provided and reserves the right to make changes and corrections at any time, without prior notice to any parties. Warrior Pte Ltd accepts no liability for any inaccuracies or omissions in its brochure and any decisions made based on information and opinions contained in the brochure is the sole responsibility of the user.

WARRIOR PTE LTD

Blk 17 Marsiling Industrial Estate Road 1 # 01-11 Singapore 739279

Tel: (65) 6364 5100 / 6364 5060 / 6367 3676 Fax: (65) 6364 0629

war99@singnet.com.sg www.warrior.com.sg

